


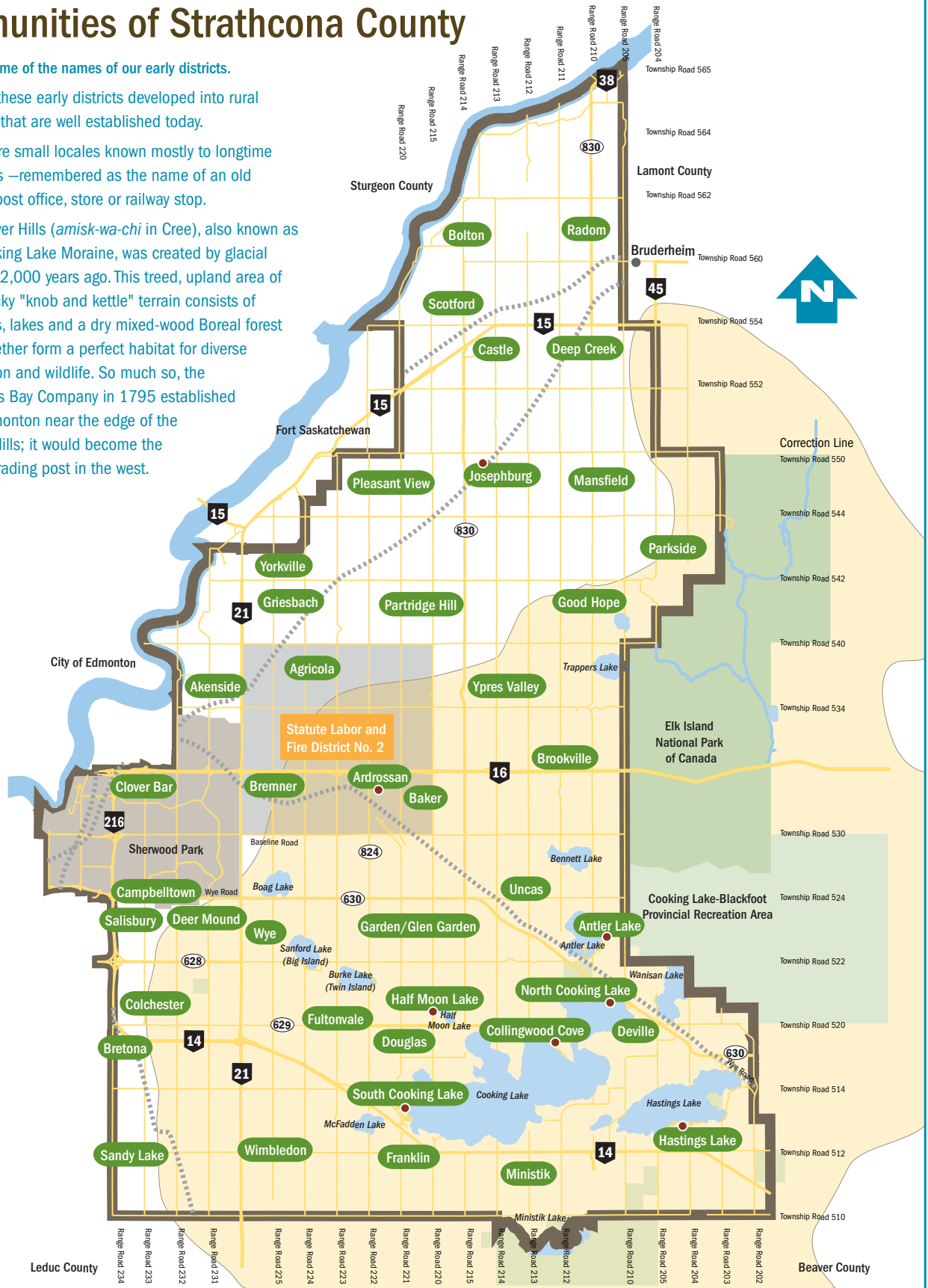


Early communities of Strathcona County

This map highlights some of the names of our early districts.

-  Eight of these early districts developed into rural hamlets that are well established today.
-  Others are small locales known mostly to longtime residents –remembered as the name of an old school, post office, store or railway stop.
-  The Beaver Hills (*amisk-wa-chi* in Cree), also known as the Cooking Lake Moraine, was created by glacial retreat 12,000 years ago. This treed, upland area of hummocky "knob and kettle" terrain consists of wetlands, lakes and a dry mixed-wood Boreal forest that together form a perfect habitat for diverse vegetation and wildlife. So much so, the Hudson's Bay Company in 1795 established Fort Edmonton near the edge of the Beaver Hills; it would become the largest trading post in the west.



Check www.strathcona.ca/history for more information on Strathcona County's past.
Further information: 780-416-6762